



Technocraft Industries (India) Limited

Regd. Office: Technocraft House, A-25, Road No. 03, MIDC Industrial Estate,
Andheri (East), Mumbai - 400093, Maharashtra, India

Tel: 022-4098 2222; Fax No. 2836 7037; CIN No. L28120MH1992PLC069252

E-mail: investor@technocraftgroup.com ; website: www.technocraftgroup.com

May 30, 2024

To,
National Stock Exchange of India Ltd.
Exchange Plaza,
Bandra Kurla Complex,
Bandra (E),
Mumbai- 400051
Ref: Script Name: TIIL

BSE Limited
Listing Department
P.J. Towers, 1st Floor,
Dalal Street, Fort,
Mumbai – 400 001
Script Code: 532804

Dear Sir / Madam,

Sub: Investor Presentation

Pursuant to regulation 30 of SEBI (Listing Obligation and Disclosure Requirement) Regulation, 2015, please find enclosed herewith Investor Presentation for the quarter / financial year ended March 31, 2024.

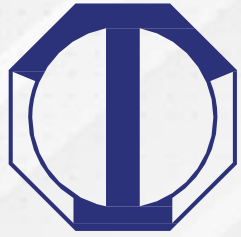
Thanking You,

Yours truly,

For Technocraft Industries (India) Limited

Neeraj Rai
Company Secretary

Encl. as above



TECHNOCRAFT
INDUSTRIES INDIA LTD.

Where The Best Is Yet To Come ...

INVESTOR PRESENTATION Q4 FY24

DISCLAIMER

This presentation and the following discussion may contain “forward looking statements” by Technocraft Industries (India) Ltd. (“TIIL” or “the company”) that are not historical in nature. These forward looking statements, which may include statements relating to future state of affairs, results of operations, financial condition, business prospects, plans and objectives, are based on the current beliefs, assumptions, expectations, estimates, and projections of the management of TIIL about the business, industry and markets in which TIIL operates.

These statements are not guarantees of future performance, and are subject to known and unknown risks, uncertainties, and other factors, some of which are beyond TIIL’s control and difficult to predict, that could cause actual results, performance or achievements to differ materially from those in the forward looking statements.

Such statements are not, and should not be construed, as a representation as to future performance or achievements of TIIL. In particular, such statements should not be regarded as a projection of future performance of TIIL. It should be noted that the actual performance or achievements of TIIL may vary significantly from such statements.

TECHNOCRAFT INDUSTRIES (INDIA) LTD.

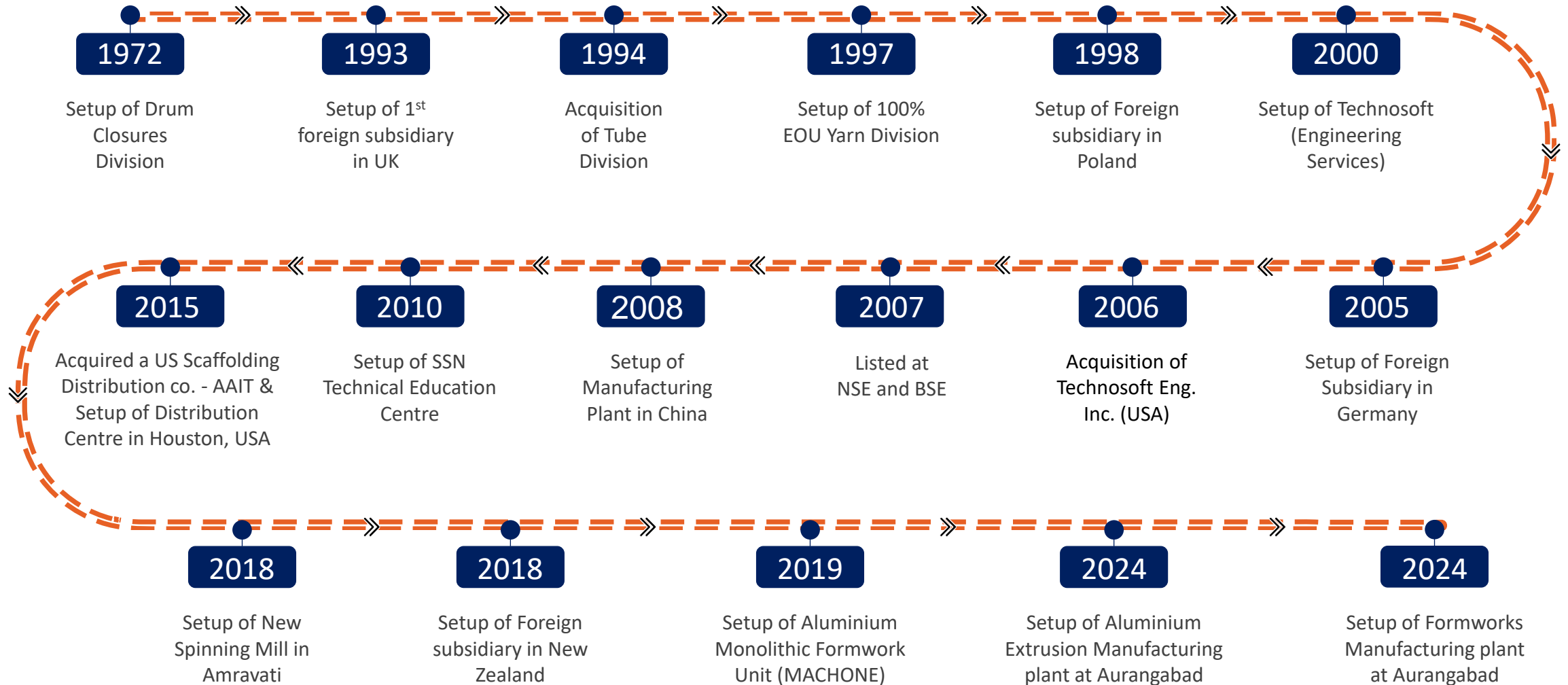
- A leading and well diversified Industrial Group.
- A Government recognized International Trading House accredited with National Award Trophy for outstanding export performance.
- Exports to more than 80 countries worldwide.
- Manufactures and exports multiple products like Drum Closures, Scaffolding Systems, Textiles and Engineering & Designing services.
- Listed on Bombay Stock Exchange and National Stock Exchange of India.
- Has its own marketing offices & warehouses in U.S.A, Canada, U.K, Poland, New Zealand, UAE, Germany and China.



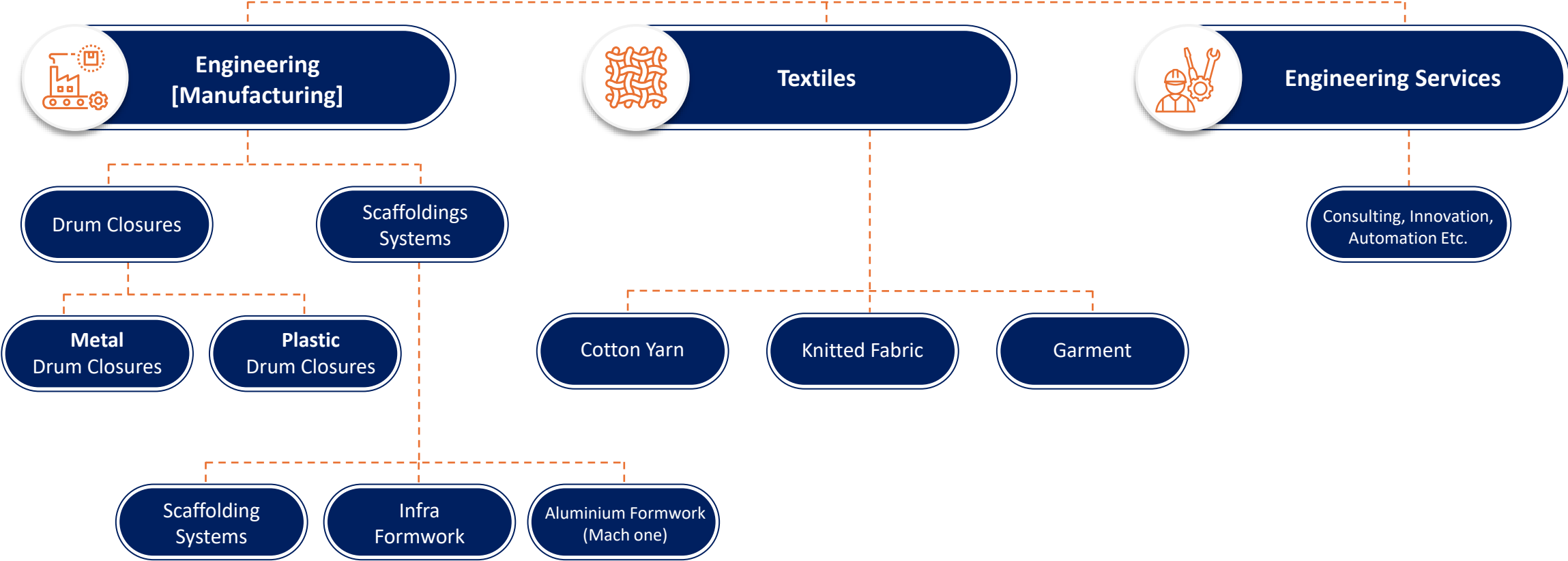
- Technocraft was established in Year 1972 with manufacturing of Steel Drum Closures and with constant innovation and expansion today it is second largest producer and exporter of Drum Closures in the world.
- In 1994 it diversified into manufacturing and exports of Steel Tubes which was later forward integrated into manufacturing of Scaffolding Systems and Formworks.
- In 1997, it further diversified into manufacturing of premium quality Cotton Yarn, Fabric & Garment. The unit was accorded 100% EOU status.
- In 2004, it went for major expansion and forward integration drive to become A Fully Vertically Integrated Textile Mill comprising Knitting, Dyeing, Finishing and Sewing operations for production of high-quality Knitted Fabrics & knitwear.
- The Company believes in constant expansion by providing most consistent and impeccable quality and services to their valuable clients worldwide.
- Technocraft is committed to ensure steady growth of the organization by determining and meeting requirements and enhancing satisfaction of internal and external customers & stakeholders.



THE JOURNEY



GROUP CHART



GEOGRAPHICAL PRESENCE



India

- Shivale Infraproducts Pvt. Ltd.
- Techno Defence Pvt. Ltd.
- Technocraft Fashions Ltd.
- Technocraft Textiles Ltd.
- Technocraft Formworks Pvt. Ltd.
- Technocraft Extrusions Pvt. Ltd.
- BMS Industries Pvt. Ltd.
- Technosoft Engineering Projects Ltd



Canada

- Technosoft Integrated Solutions Inc



New Zealand

- Technocraft NZ Ltd



China

- Anhui Reliable Steel Technology Co. Ltd.



Germany

- Technosoft GmbH



USA

- AAIT/Technocraft Scaffold Distribution LLC
- Technosoft Engineering, Inc.
- Technosoft Innovations Inc.
- Technosoft Services Inc.



Netherlands

- Technosoft Engineering Solutions



UAE

- Highmark International Trading F.Z.E



UK

- Technocraft International Limited
- Technosoft Engineering UK Ltd



Poland

- Technocraft Trading Spolka, Z.O.O

DRUM CLOSURES – OVERVIEW

The company specializes in manufacturing and supply of Steel Drum Closure. Manufacturing facilities are supplemented with good Research and Development facilities and facilities for Quality Control, Testing and Packaging. The Company is second largest manufacturer of steel drum closures having worldwide market share of approximately 36%. Company produces wide variety of closures ranging from fully automatic flange insertion system to cap-sealing tools. The Company has manufacturing facilities in India as well as in China.



Drum Closures



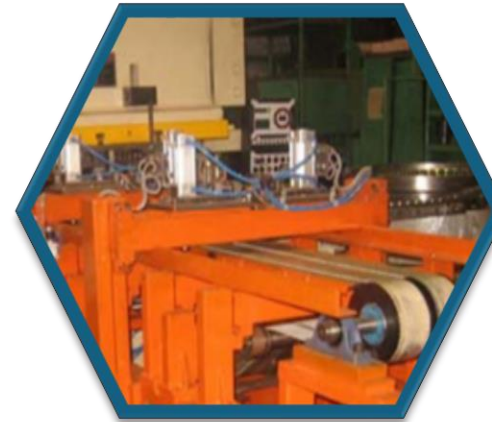
Nylon & Plastic Plugs



Capseal Closures



Canseal Closures



Insertion Dies



Clamps

DRUM CLOSURES – STRENGTH

01

Complete product portfolio

- Flanges, Gaskets, Epoxy and Phenolic Lacquered Closures
- Stainless Steel Closures
- Lever Latches for Fibre and Metal Drum Locking Rings



02

Relationships

- Marketing & Distribution setup spreads to over 80 countries
- Second largest market share globally (ex- China)
- Longstanding relationships ensures higher repeat and referral orders



03

Innovation

- Designed & developed the next generation patented technology for manufacturing of drum closures
- Three global patent products for manufacturing of GRT Flanges, Octagonal
- Clinched and Drum Top
- In-house facility for Tool & Die manufacturing & designing



SCAFFOLDING SYSTEMS – OVERVIEW

The Company is into manufacturing of high quality and high-performance engineering modular panel shoring system which is used in residential and commercial building constructions, Industries, and Infrastructure.

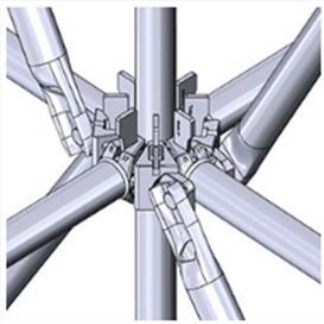
Company manufactures high quality steel tubes in-house which is one of the major components of Scaffolding Systems. Scaffolding system has been designed keeping in mind the ease of erection, health and safety regulations & without loose fitting and hardware. Company is present in premium segment of scaffolding business.

The company is a leading manufacturer and supplier of Formwork for the Buildings and Infrastructure projects. It is in this business since 2010 and is currently producing multiple type of formwork systems for different requirements in construction.

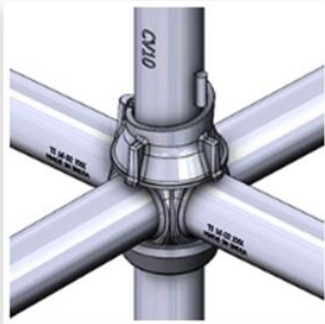


- **New product** - Manto panels For Global markets, Mach Alu ply system For Wall form , 10K Shoring Systems for USA, Tech Euro- 3 props.
- **New facilities** - Powder Coating systems, Aluminum Fabrication.
- **New processes** - Robotic welding & Material Handling cells for Mild steel as well Aluminum.
- **Development in plants** - Establishment of in house six axes Robot Integration for steel & Aluminum welding with additional external axes & **Material**
- **handling with offline programming of Robots** – Resulting into effective utilization of manpower & improved Reliability & on time Delivery.
- **New facilities in progress** - Installation of Roof top Solar power Panels for Green Power generation.
- **New Products in pipeline** - Self Climbing Screen system, Suspended scaffold access system, Heavy Duty Post, Heavy Duty frames for Retaining wall.

SCAFFOLDING SYSTEMS – PRODUCTS



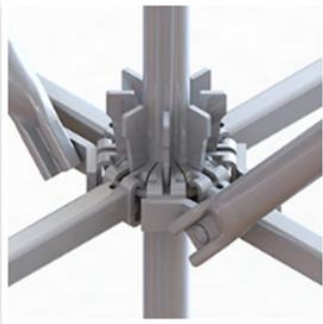
TECHRING



TECHLOK



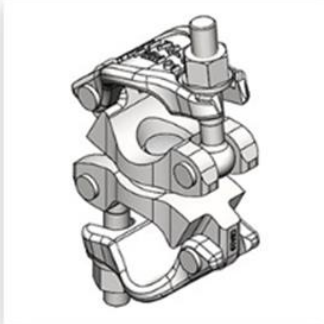
TECH STAGE



MACH PLUS



ACCESS FRAMES



COUPLERS



SHORING PROPS



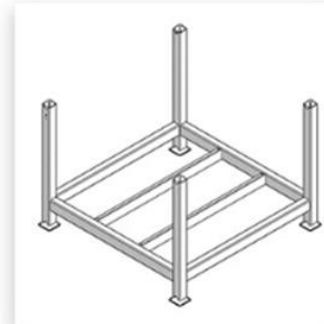
SCAFFOLDING ACCESSORIES



PLANKS AND WALKWAYS



STAIR & LADDER SYSTEM



SYSTEM RACK AND BASKET

SCAFFOLDING SYSTEMS – PRODUCTS



MACH DECK



MACH ONE - MONOLITHIC



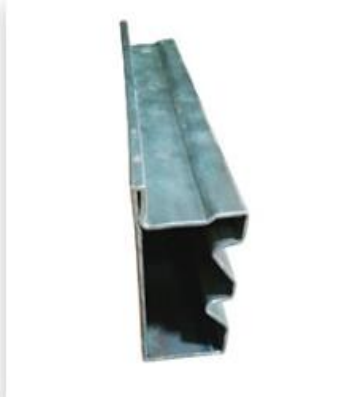
MACH INFRA



MACH ALUPLY



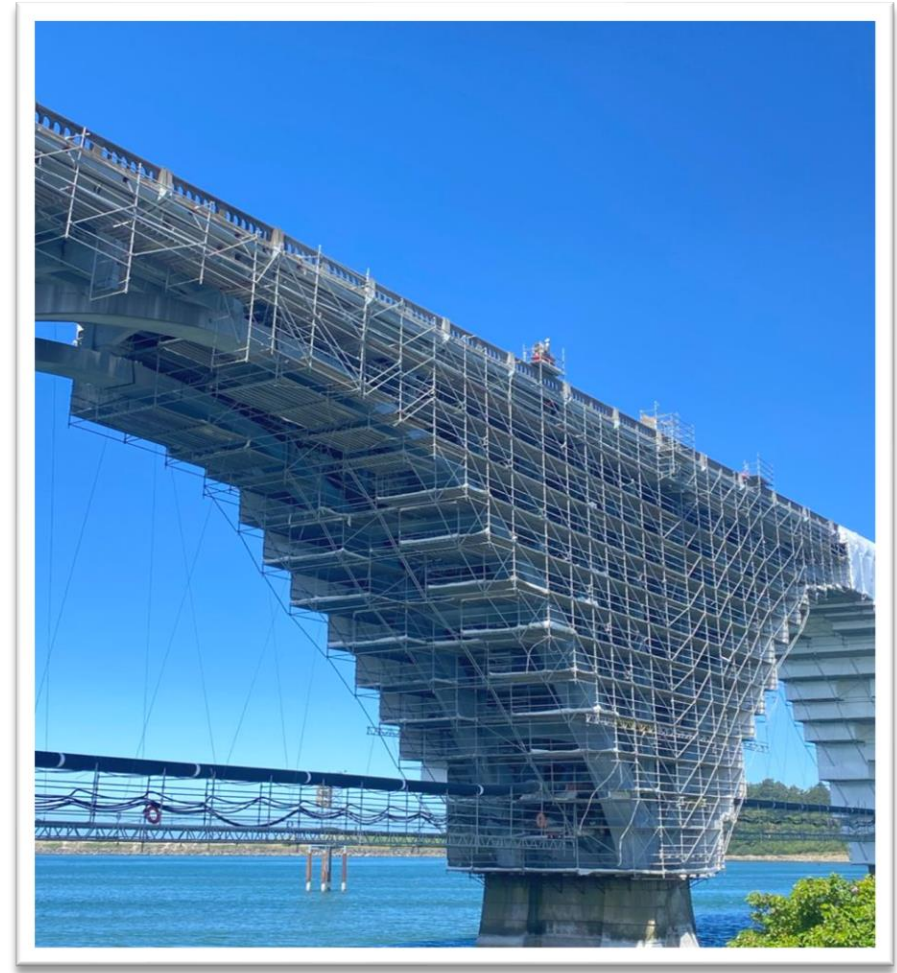
SHORING FRAMES



SPECIAL PROFILES

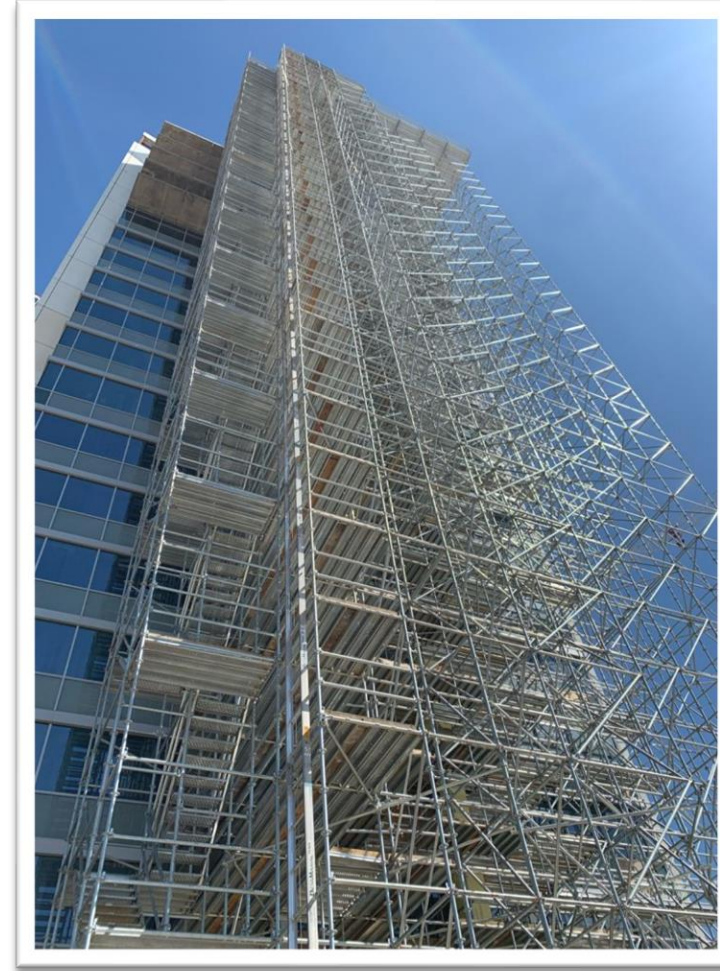
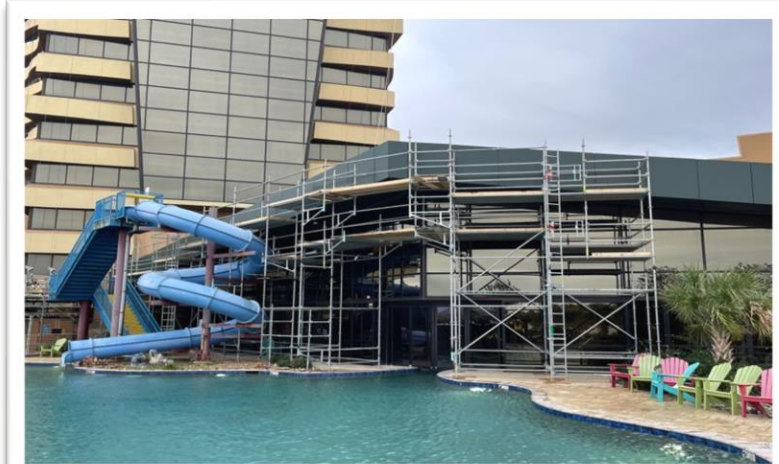
SCAFFOLDING SYSTEMS – PROJECTS SNAP SHOTS

Ringlock System used for Washington, USA Bridge repair



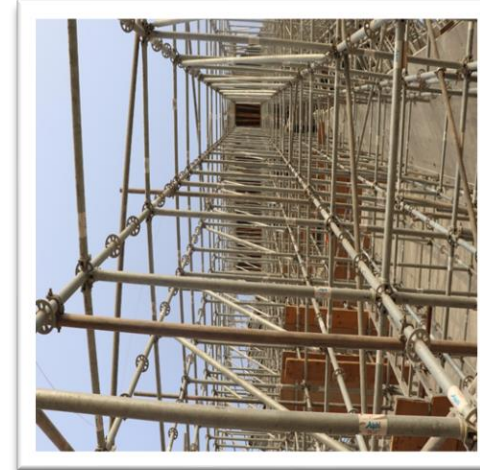
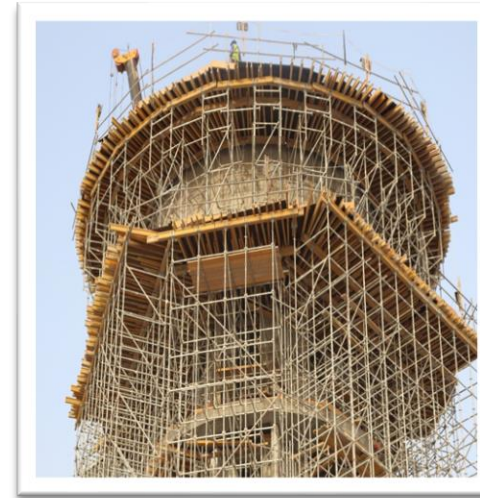
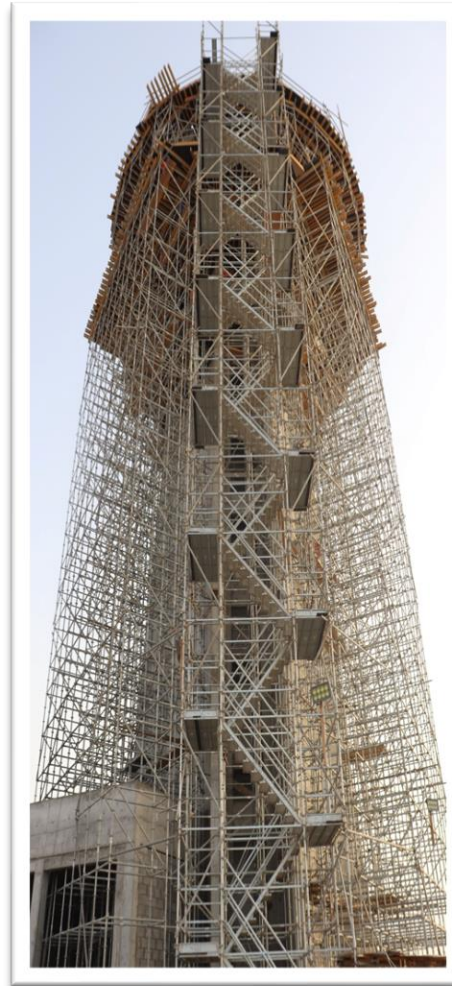
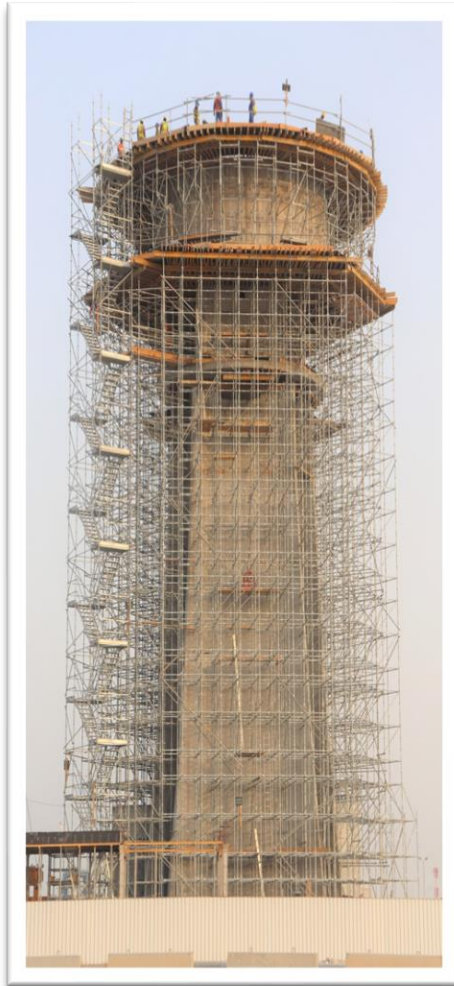
SCAFFOLDING SYSTEMS – PROJECTS SNAP SHOTS

Cuplock and Ringlock System used in Multiple projects at North and South America



SCAFFOLDING SYSTEMS – PROJECTS SNAP SHOTS

Ringlock + Machplus System used for Over head water tank construction at Qatar



SCAFFOLDING SYSTEMS – USE OF LATEST TECHNOLOGY



Robot welding at Scaffolding Dept.



Pick & Place Robot



Robot at Mach one (Aluminium Welding)

SCAFFOLDING SYSTEMS – NEW PROJECT – TECHNOCRAFT EXTRUSIONS PVT LTD

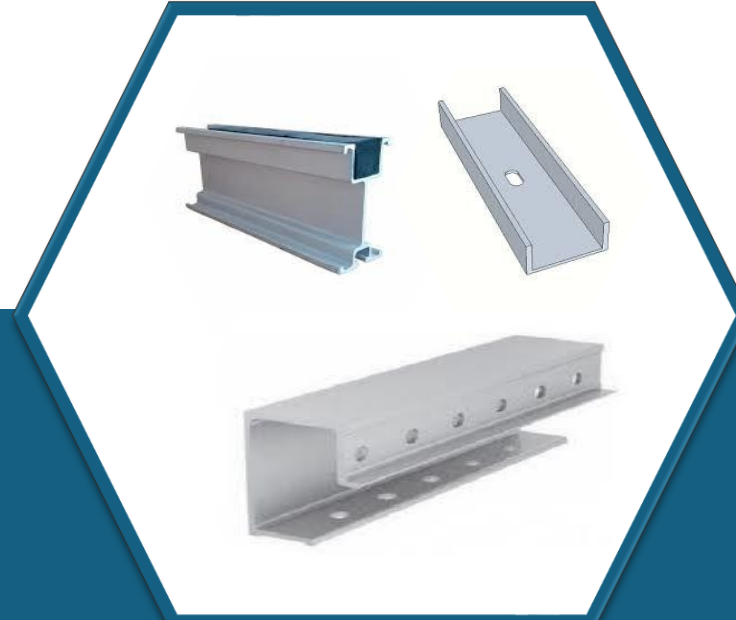
The Company through its wholly owned subsidiary - Technocraft Extrusions Pvt. Ltd. (TEPL) has setup a state of Art Aluminum Extrusion manufacturing unit at Bidkin region of Aurangabad in Maharashtra. TIIL is already having Aluminum Fabrication activity at Murbad (Maharashtra) and Extrusion being an additional activity.

➤ **Capacity: 1500 MT per month**

➤ **Extrusion size: Up to 300mm C channel**

➤ **Extrusion lines: 2 lines - 7" line and 9" line**

➤ **Ingot manufacturing: In-house**



SCAFFOLDING SYSTEMS – NEW PROJECT – TECHNOCRAFT FORMWORKS PVT LTD

The Company through its wholly owned subsidiary - Technocraft Formworks Pvt. Ltd. (TFPL) has setup a state of Art Aluminum Fabrication and Steel Fabrication manufacturing unit at Bidkin region of Aurangabad in Maharashtra. TIL is already having Steel Fabrication manufacturing and Aluminum Fabrication activity at Murbad and Shivale (Maharashtra).

➤ **Capacity: 60,000 sqm per month**

➤ **Automatic panel welding on Robots**

➤ **Conveyor based Auto lacquering line**

➤ **ERP driven packaging and dispatch**



TEXTILE – OVERVIEW

Company has integrated Textile plant for manufacturing Cotton Yarn, Fabric (Greige & Dyed) and Garments in India.

A. Spinning – Cotton Yarn

Company has units for Manufacturing of cotton Greige yarn at Amravati (Maharashtra).

"**TECHNOCRAFT**" is an internationally renowned brand name due to its most consistent and premium quality Yarns. The Company has won number of awards for export excellence, including Best Export Performance by hands of Prime Minister of India.



B. Knitted Fabric and Dyed Yarn

Company is Manufacturing & Exporting Cotton and Synthetic Blended fabric and Fabric made from Dyed Yarn. Due to in-house spinning, company is able to offer a strategic advantage to its customers in terms of better-quality products at a shorter lead-time.



C. Dyeing & Finishing

Equipped with Fabric dyeing facility with computerized color matching on Data Color Spectrophotometer SF 600 to get accurate 'lab to bulk' matching and consistent dyeing lots continuity.



D. Garments

Technocraft is one of the premier, wholly integrated manufacturer of premium quality knitwear which makes it one of the leading textile and apparel manufacturer in India. It has two units - one at Amravati (Maharashtra) and another one at Betul (MP).

TEXTILE – PRODUCTS



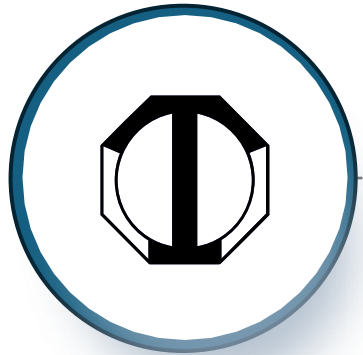
TEXTILES – NEW PROJECT – TECHNOCRAFT TEXTILES LTD

The Company through its wholly owned subsidiary - Technocraft Textiles Ltd. (TTL) has setup a state of Art cotton Yarn manufacturing unit at Amravati region of Maharashtra. Capacity for the project: Spinning 7300 Tons p.a.

The New Plant at Amravati has locational advantage of nearness to market, low cost of man power and electricity and latest technology.



TECHNOSOFT ENGINEERING PROJECTS LTD. – OVERVIEW



Technosoft Engineering Projects Limited is a subsidiary of Technocraft Industries (India) Ltd.



It is a global technology services company offering broad-based engineering, designing and IT services using a variety of client-partnership models for delivery.



It's client base spans various industry verticals including heavy machinery, automotive, aerospace, manufacturing, oil & gas, high-tech, telecom, healthcare and financial services. The client base is widely spread globally including many clients from US, Canada, UK and Germany.



It has a strong team of 800 plus Engineers and designers located worldwide. Its engineers and designers are equipped with state-of-the-art hardware and software tools, including tools for 3-D modeling, Finite Element Analysis and process simulation.



TECHNOFT ENGINEERING PROJECTS LTD. – SERVICES



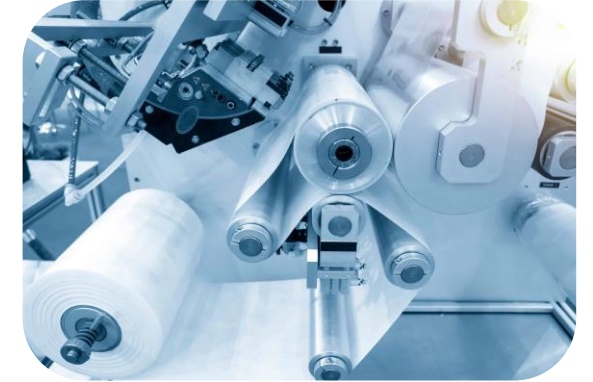
Product Engineering



Plant Engineering



Digital Manufacturing & Consulting



Turnkey Solutions



Software Solutions



Data Services



Advanced Engineering Services

EXHIBITIONS – ASOD MEET – SOUTH KOREA, APRIL 24



EXHIBITIONS – SEOUL, SOUTH KOREA



The Seoul Exhibition, Preview 2023: A remarkable convergence of fashion and diplomacy, showcasing the power of creativity and collaboration.

The Embassy of India Seoul team including the Deputy Chief of Mission - Mr. Nishi Kant Singh visiting our stall



Jamie Kay, New Zealand - visiting our Design Studio for the yarns, fabrics & garments.

EXHIBITIONS – CHEMEXPO/CHEMPROTECH

Participation in Chemexpo/Chemprotech, 2024 exhibition held in April 24 in Mumbai, showcasing our entire product range of Drum Closures, getting good response from new end users.



EXHIBITIONS - DHAKA

Participation in Dhaka Exhibition for Yarns, Fabrics & Garments.



CORPORATE SOCIAL RESPONSIBILITY



Technocraft Promoted “Technocraft Centre for Applied Artificial Intelligence (TCA2I)” in IIT campus, Mumbai by donating Rs. 15 crores to IIT Bombay



IIT Bombay inaugurates TCA2I to promote research in AI

CORPORATE SOCIAL RESPONSIBILITY



Shanti Seva Nidhi



Shanti Seva Nidhi (SSN), a public charitable Trust, is a CSR activity of Technocraft.

It was established in 1994 with the view to develop technology in the region and with objectives of running Educational Institutes, providing Medical Assistance, arranging Social and Cultural events, helping and supporting measures for total uplift of Human personality Physical, Mental and Spiritual.

The initiatives span over issues like Education, Skill Development, Water Conservation, Environment Protection, Public Health and Woman and Youth Welfare.

In 2010 SSN tied up with Nettur Technical Training Foundation (NTTF), Bengaluru to bring the esteemed Institute in Maharashtra for the first time and aimed at promoting purposeful Technical Education for the youth of India. With vision and mission to transforming the life of youth, SSN started various programs in Murbad region, which is comparatively a backward region.

It has setup a state of art Technical Education Centre at Murbad Taluka. The campus is 10 acres of lush green landscaped plot with academia, hostels and staff quarters. Apart from the Main Building which is used as Study and Training center for the students, it also has facility of Students' Hostel, Canteen, Staff Quarters, Library, computer lab, workshop hall for practical experience and open area for Sports and recreational activities.

QUALITY, ENVIRONMENT, OCCUPATIONAL HEALTH AND SAFETY MANAGEMENT SYSTEM POLICY

Technocraft Industries (India) Limited understands that even if one piece of drum closure is wrongly employed or bad in one million sets, for the end user, it is going to be one defective assembly that may spill hazardous material at a wrong Time in a wrong place, causing serious problems to ecology and environment. Hence, everyone in Technocraft Industries (India) Limited is committed to manufacture and supply drum closures of 50 mm (2") & 20 mm (3/4") size and its accessories meeting the requirements of end users ensuring their complete satisfaction and other interested parties through

- Motivating, involving, training the people engaged in our various processes
- Controlling the processes
- Fulfilling all applicable legal requirements related to Environment, Occupational Health & Safety, Quality and other requirements
- Protecting environment, preventing pollution due to our activities
- Protecting environment, preventing pollution due to our activities
- Providing safe and healthy workplace by preventing work related injury & ill health
- Consultation & participation of workers in Environment, Occupational Health & safety matters



CONSOLIDATED PROFIT & LOSS STATEMENT – QUARTERLY FINANCIAL RESULTS

Particulars	Amount in INR Lakhs			% Change Y-o-Y
	Oct - Dec 23	Jan - Mar 24	Jan - Mar 23	
Operating Revenue	51,267	59,255	48,049	23%
Other Income	2,559	3,300	575	474%
Total Revenue	53,827	62,555	48,624	29%
Cost of Goods Sold	23,673	28,818	19,221	50%
Employee benefits expense	7,608	7,157	5,411	32%
Finance costs	907	946	745	27%
Depreciation and amortisation expense	1,723	1,823	1,804	1%
Other expenses	11,787	14,875	14,662	
Total Expenses	45,698	53,619	41,843	28%
Profit Before Tax & Exceptional Item	8,128	8,936	6,781	32%
Profit Before Tax & Exceptional Item as a % of Operating Revenue	16%	15%	14%	
EBITDA	10,758	11,706	9,330	25%
EBITDA as a % of Operating Revenue	21%	20%	19%	

CONSOLIDATED PROFIT & LOSS STATEMENT – FOR THE YEAR

Particulars	Amount in INR Lakhs		% Change
	Apr - Mar24	Apr - Mar23	
Operating Revenue	2,18,163	1,98,453	10%
Other Income	8,991	5,037	79%
Total Revenue	2,27,154	2,03,490	12%
Cost of Goods Sold	98,918	79,457	24%
Employee benefits expense	28,383	21,512	32%
Finance costs	3,967	2,793	42%
Depreciation and amortisation expense	6,769	6,402	6%
Other expenses	51,026	57,148	
Total Expenses	1,89,063	1,67,312	13%
Profit Before Tax & Exceptional Item	38,091	36,178	5%
Profit Before Tax & Exceptional Item as a % of Operating Revenue	17%	18%	
EBITDA	48,826	45,372	8%
EBITDA % of Operating Revenue	22%	23%	

RATIOS

Ratios	Amount in INR Lakhs			
	Apr – Mar 24	Apr – Mar 23	Jan - Mar 24	Jan - Mar 23
Operating Margin	19%	20%	17%	16%
Net Profit Margin	13%	14%	10%	10%
Debt Equity Ratio	0.40 Times	0.46 Times	0.40 Times	0.46 Times
Current Ratio	1.97 Times	1.80 Times	1.97 Times	1.80 Times
Debtors	45,394	41,962	45,394	41,962
Debtors Days	76 Days	77 Days	69 Days	79 Days
Inventory	71,429	78,982	71,429	78,982
Inventory Days	120 Days	145 Days	108 Days	148 Days
Capital Employed	1,84,131	1,49,498	1,84,131	1,49,498
ROCE %	23%	26%	21%	20%

CONSOLIDATED SEGMENTAL ANALYSIS – REVENUE (QUARTERLY)

Income from continued operations	Amount in INR Lakhs			% Change Y-o-Y
	Oct - Dec 23	Jan - Mar 24	Jan - Mar 23	
Drum Closure Division	12,549	15,303	12,753	20%
Scaffoldings Division	23,206	29,134	21,395	36%
Textiles Division	12,206	11,107	12,261	(9%)
Engineering & Designing Services	5,460	4,936	3,691	34%
Others	-	-	22	
Sub - Total	53,421	60,480	50,122	21%
Less: Inter Unit	(2,153)	(1,225)	(2,073)	
Total	51,267	59,255	48,049	23%

CONSOLIDATED SEGMENTAL ANALYSIS: EBIT (QUARTERLY)

Segment Results Profit/(Loss) after Depreciation but Before Finance Cost and Tax	Amount in INR Lakhs			% Change Y-o-Y
	Oct - Dec 23	Jan - Mar 24	Jan - Mar 23	
Drum Closure Division	4,167	5,557	4,284	30%
Scaffoldings Division	3,414	2,707	3,557	(24%)
Textiles Division	(570)	242	(589)	(141%)
Engineering & Designing Services	830	765	746	3%
Others	(1)	(20)	(39)	
Total	7,840	9,251	7,959	16%

CONSOLIDATED SEGMENTAL ANALYSIS: REVENUE (FOR THE YEAR)

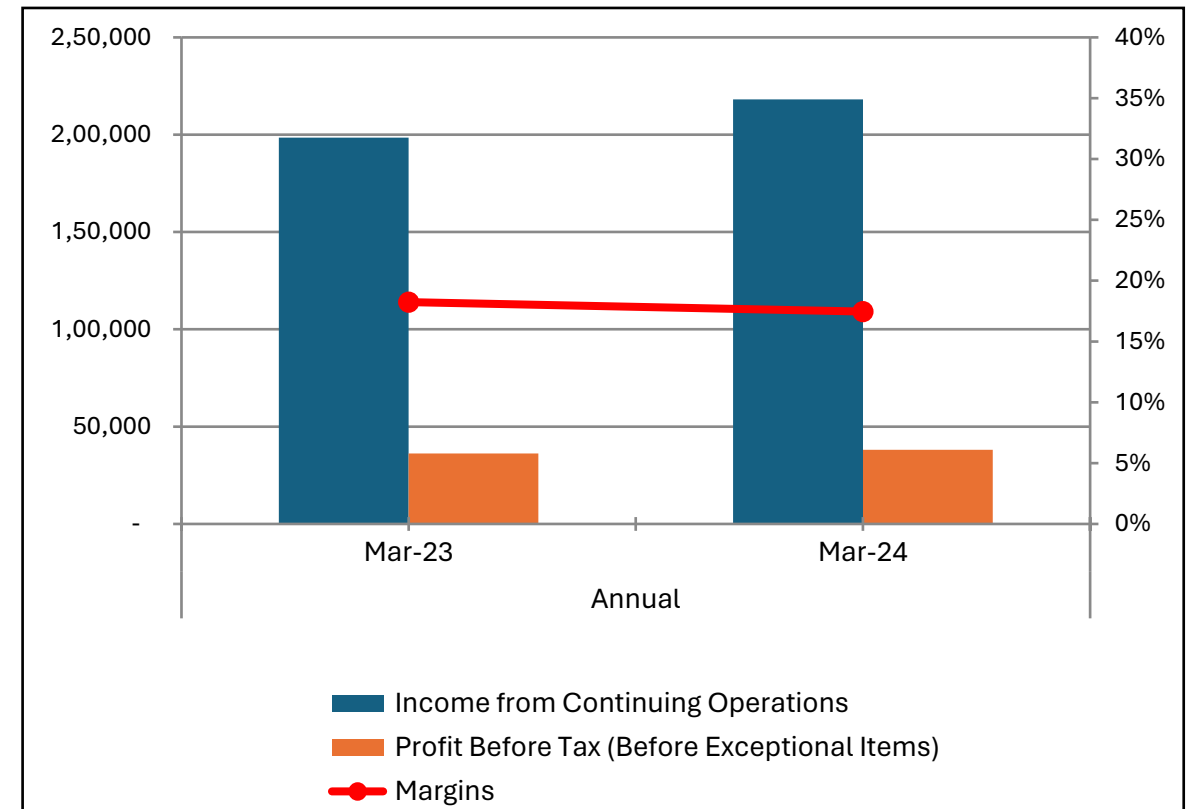
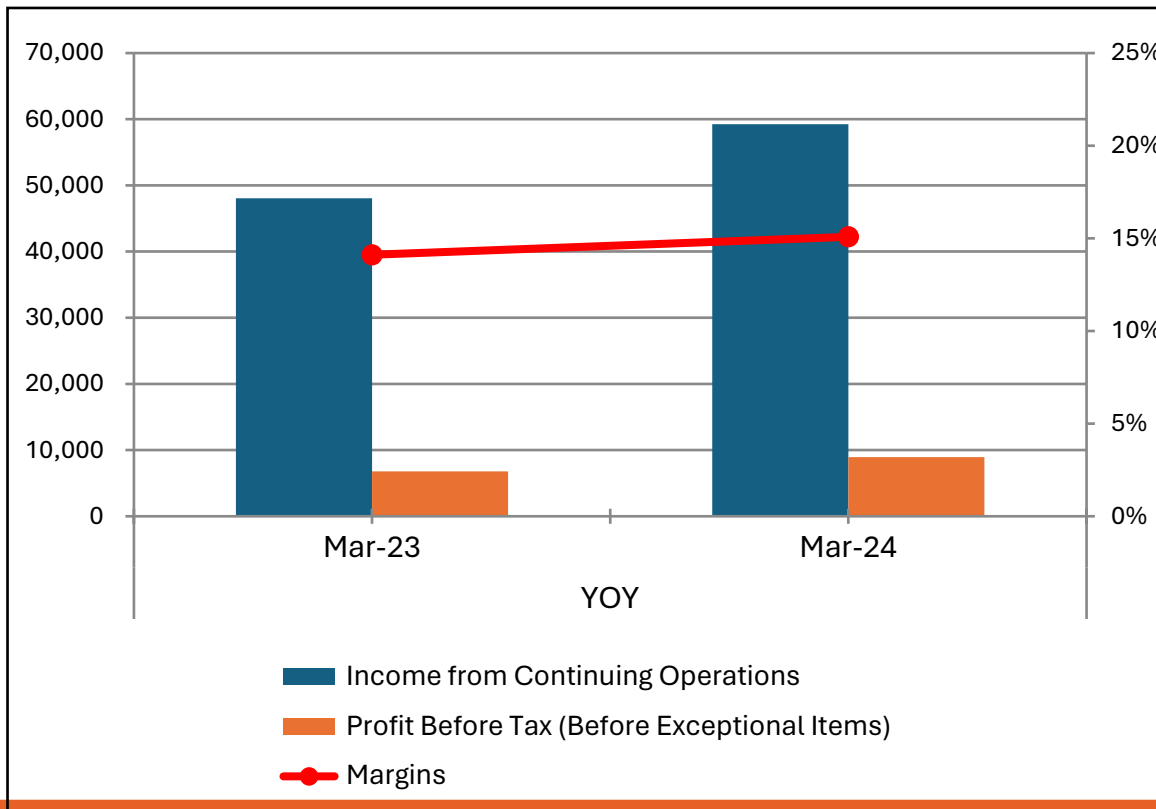
Income from continued operations	Amount in INR Lakhs		% Change
	Apr – Mar 24	Apr – Mar 23	
Drum Closure Division	54,303	53,478	2%
Scaffoldings Division	1,03,240	88,944	16%
Textiles Division	49,181	52,414	(6%)
Engineering & Designing Services	19,840	13,622	46%
Others	-	22	
Sub - Total	2,26,564	2,08,480	9%
Less: Inter Unit	(8,401)	(10,027)	
Total	2,18,163	1,98,453	10%

CONSOLIDATED SEGMENTAL ANALYSIS: EBIT (FOR THE YEAR)

Segment Results Profit/(Loss) after Depreciation but Before Finance Cost, Tax	Amount in INR Lakhs		% Change
	Apr – Mar 24	Apr – Mar 23	
Drum Closure Division	18,578	16,252	14%
Scaffoldings Division	18,384	22,725	(19%)
Textiles Division	(1,684)	(3,013)	(44%)
Engineering & Designing Services	3,782	2,721	39%
Others	(21)	(40)	
Total	39,038	38,644	1%

CONSOLIDATED FINANCIALS REVENUE, PBT & MARGIN

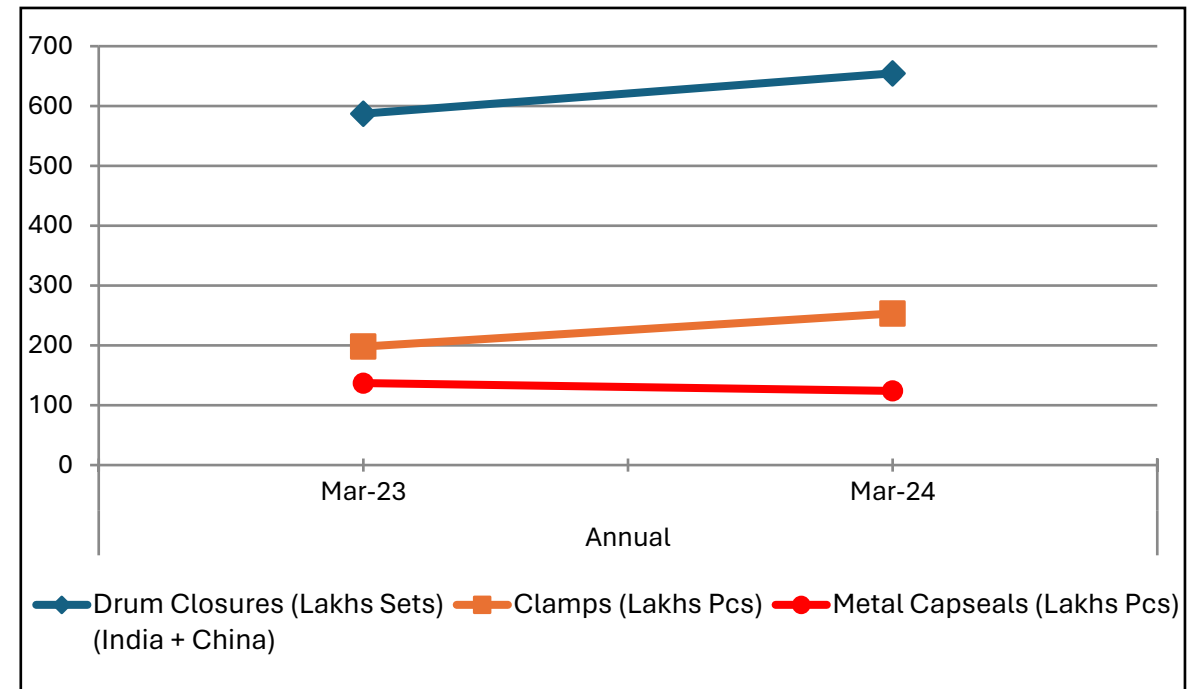
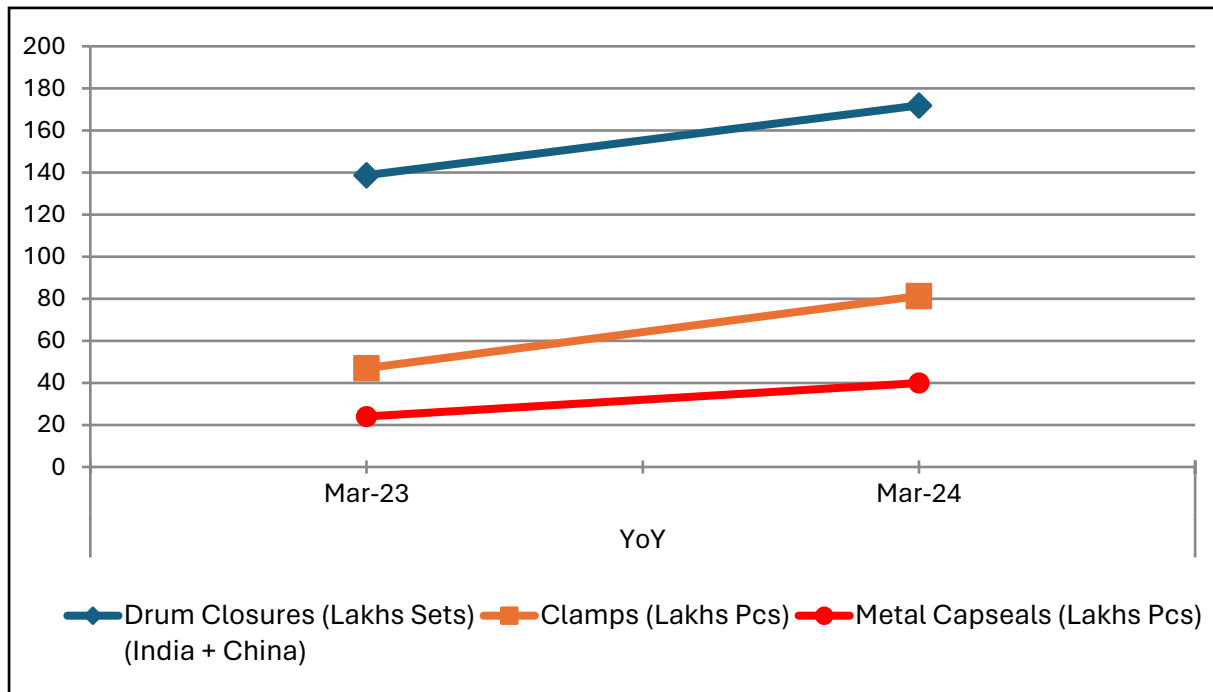
Particulars	Amount in INR Lakhs			
	YoY		Annual	
	Mar-23	Mar-24	Mar-23	Mar-24
Income from Continuing Operations	48,049	59,255	1,98,453	2,18,163
Profit Before Tax (Before Exceptional Items)	6,781	8,936	36,177	38,091
Margins	14%	15%	18%	17%



DRUM CLOSURES BUSINESS – VOLUME

Sales Volume	YoY	
	Mar 23	Mar 24
Drum Closures (Lakhs Sets) (India + China)	139	172
Clamps (Lakhs Pcs)	47	81
Metal Capseals (Lakhs Pcs)	24	40

Sales Volume	Annual	
	Mar 23	Mar 24
Drum Closures (Lakhs Sets) (India + China)	587	655
Clamps (Lakhs Pcs)	198	253
Metal Capseals (Lakhs Pcs)	137	124

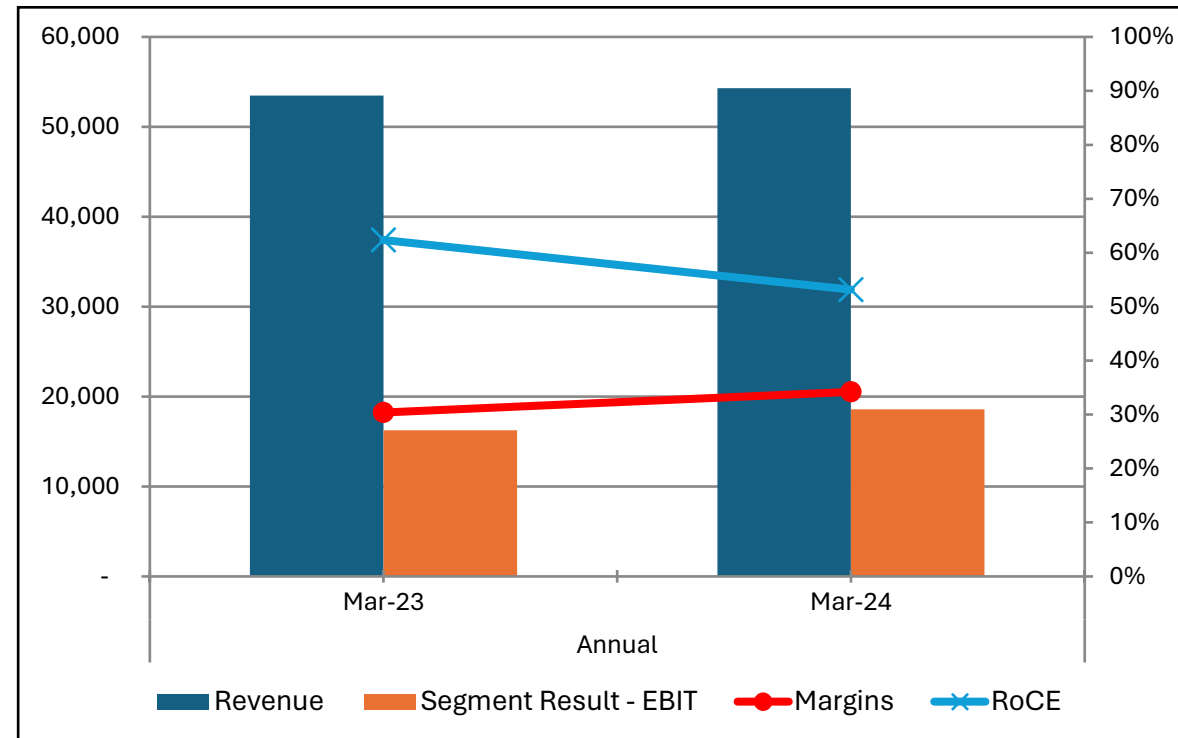
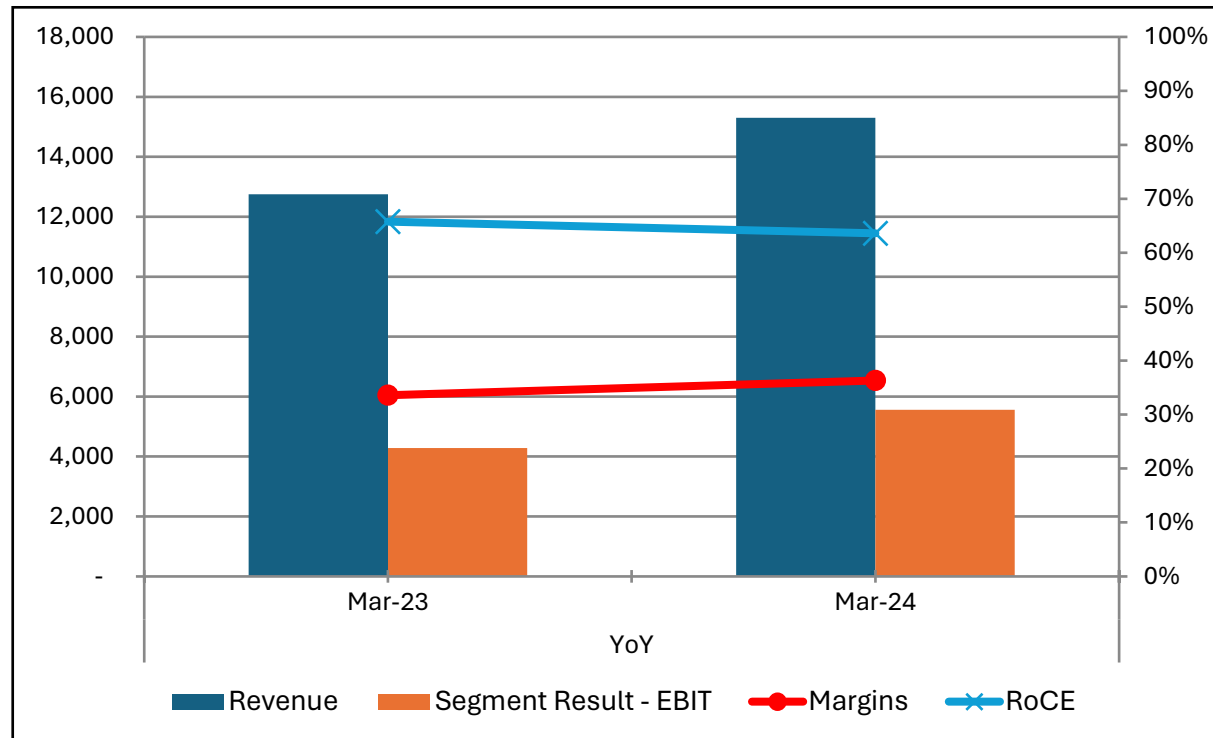


DRUM CLOSURES BUSINESS – FINANCIALS

INR Lakhs

Consolidated Financials	YoY	
	Mar 23	Mar 24
Revenue	12,753	15,303
Segment Result - EBIT	4,284	5,557
Margins	34%	36%
RoCE	66%	64%

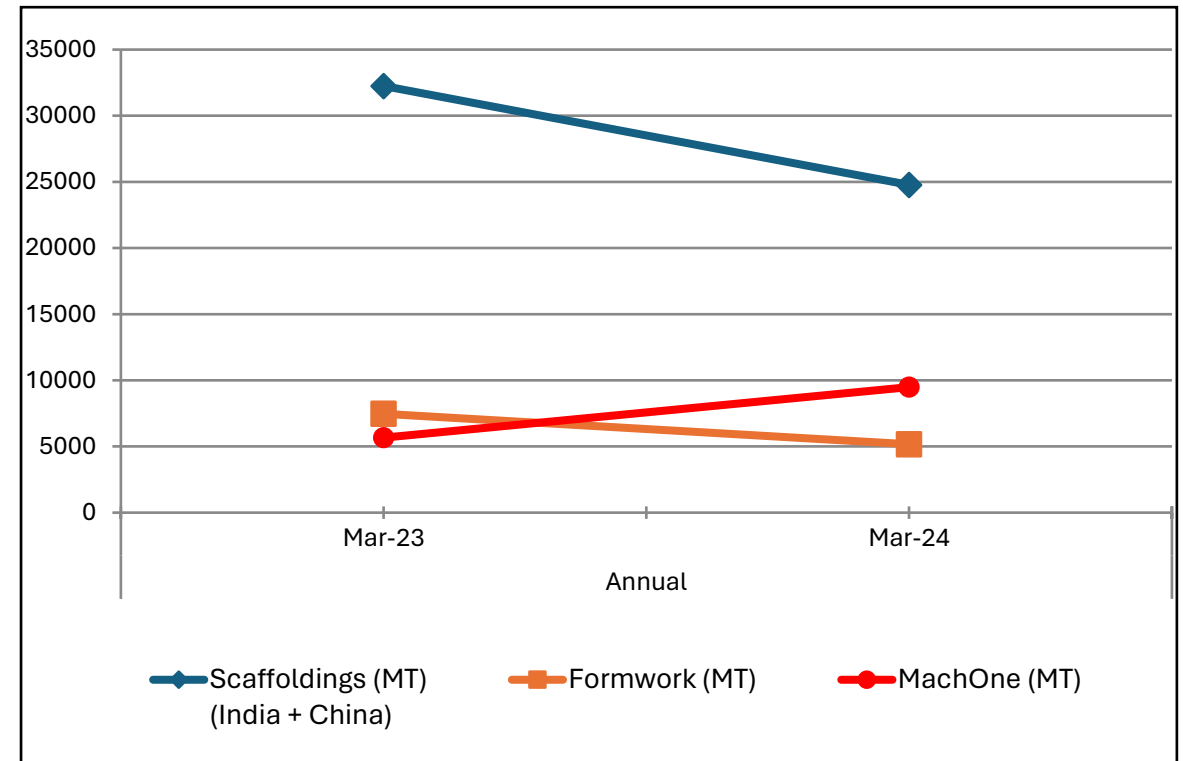
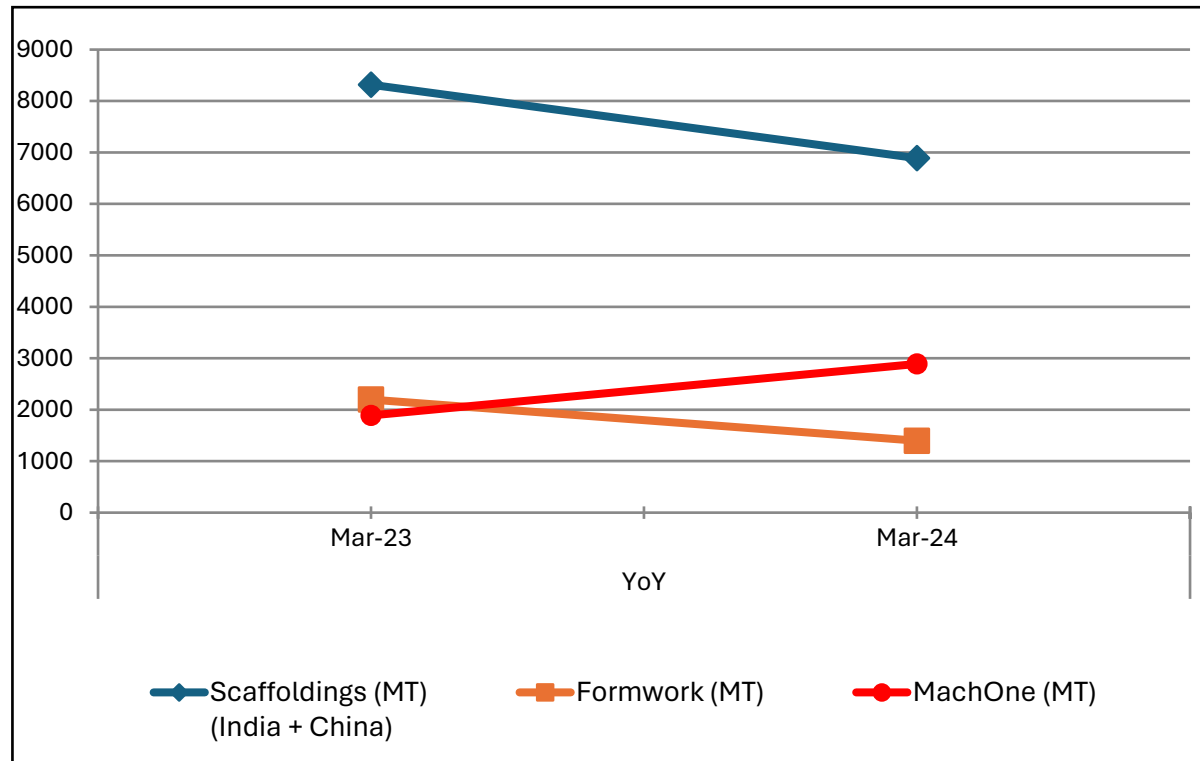
Consolidated Financials	Annual	
	Mar 23	Mar 24
Revenue	53,478	54,303
Segment Result - EBIT	16,252	18,578
Margins	30%	34%
RoCE	62%	53%



SCAFFOLDINGS & FORMWORKS BUSINESS – VOLUME

Sales Volume	YoY	
	Mar 23	Mar 24
Scaffoldings (MT)	8,317	6,890
Formwork (MT)	2,197	1,396
MachOne (MT)	1,890	2,891

Sales Volume	Annual	
	Mar 23	Mar 24
Scaffoldings (MT)	32,241	24,766
Formwork (MT)	7,471	5,164
MachOne (MT)	5,668	9,489

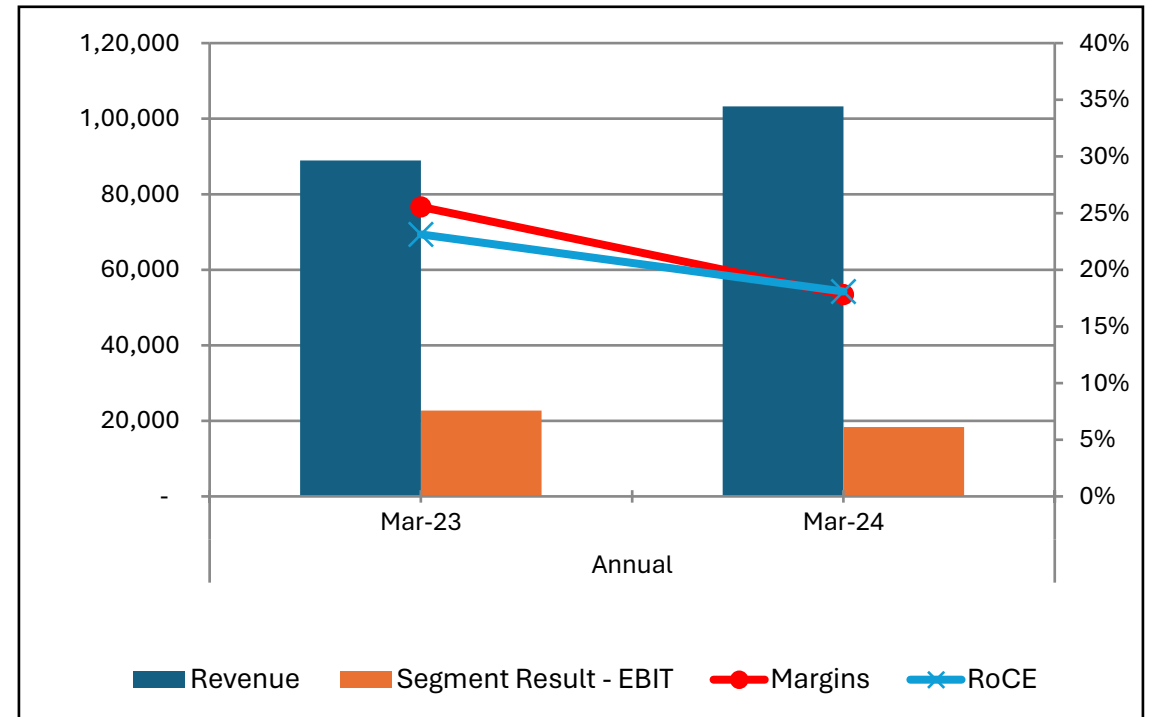
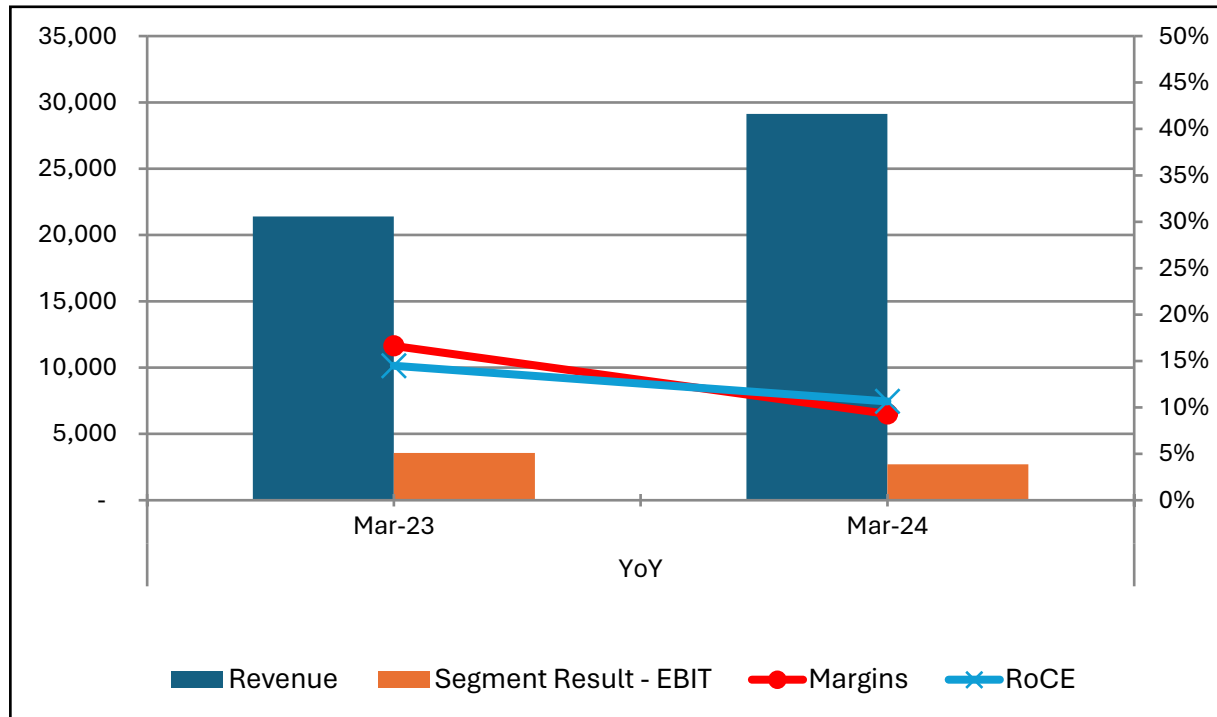


SCAFFOLDINGS & FORMWORK BUSINESS – FINANCIALS

INR Lakhs

Consolidated Financials	YoY	
	Mar 23	Mar 24
Revenue	21,395	29,134
Segment Result - EBIT	3,557	2,707
Margins	17%	9%
RoCE	14%	11%

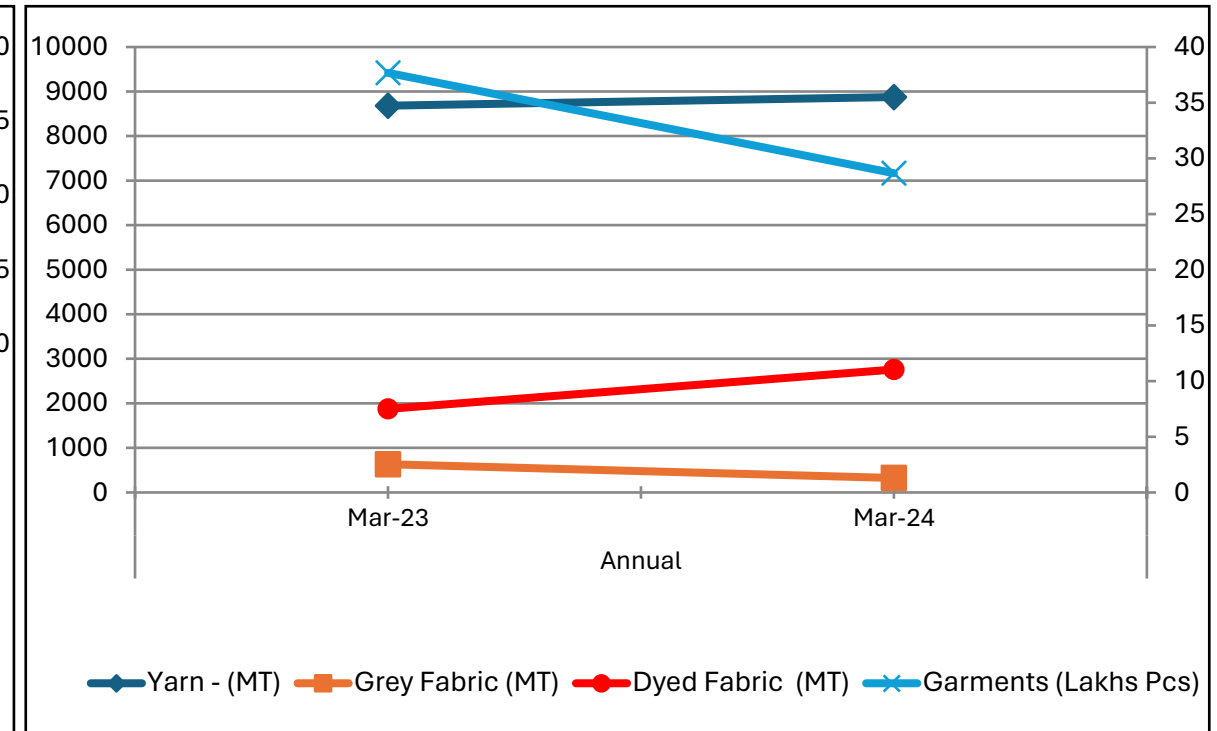
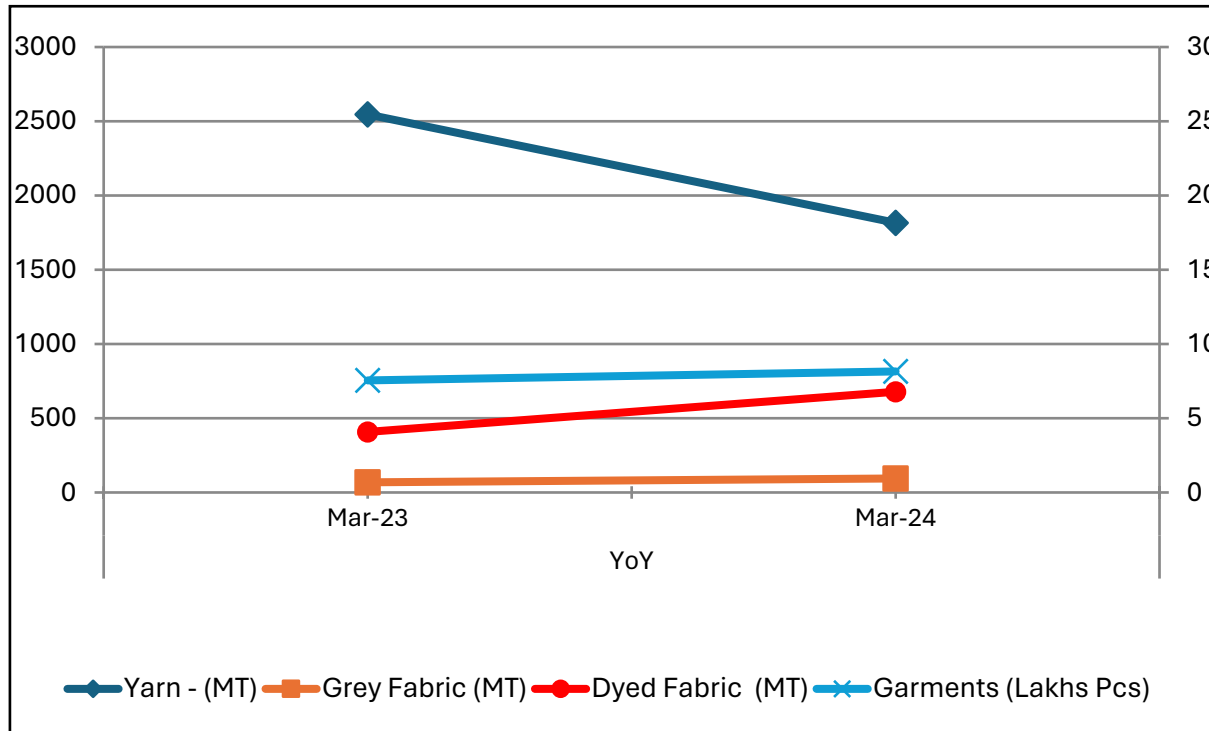
Consolidated Financials	Annual	
	Mar 23	Mar 24
Revenue	88,944	1,03,240
Segment Result - EBIT	22,725	18,384
Margins	26%	18%
RoCE	23%	18%



TEXTILE BUSINESS – VOLUME

Sales Volume	YoY	
	Mar 23	Mar 24
Yarn - (MT)	2546	1816
Grey Fabric (MT)	68	93
Dyed Fabric (MT)	407	678
Garments (Lakhs Pcs)	8	8

Sales Volume	Annual	
	Mar 23	Mar 24
Yarn - (MT)	8681	8874
Grey Fabric (MT)	632	325
Dyed Fabric (MT)	1877	2760
Garments (Lakhs Pcs)	38	29

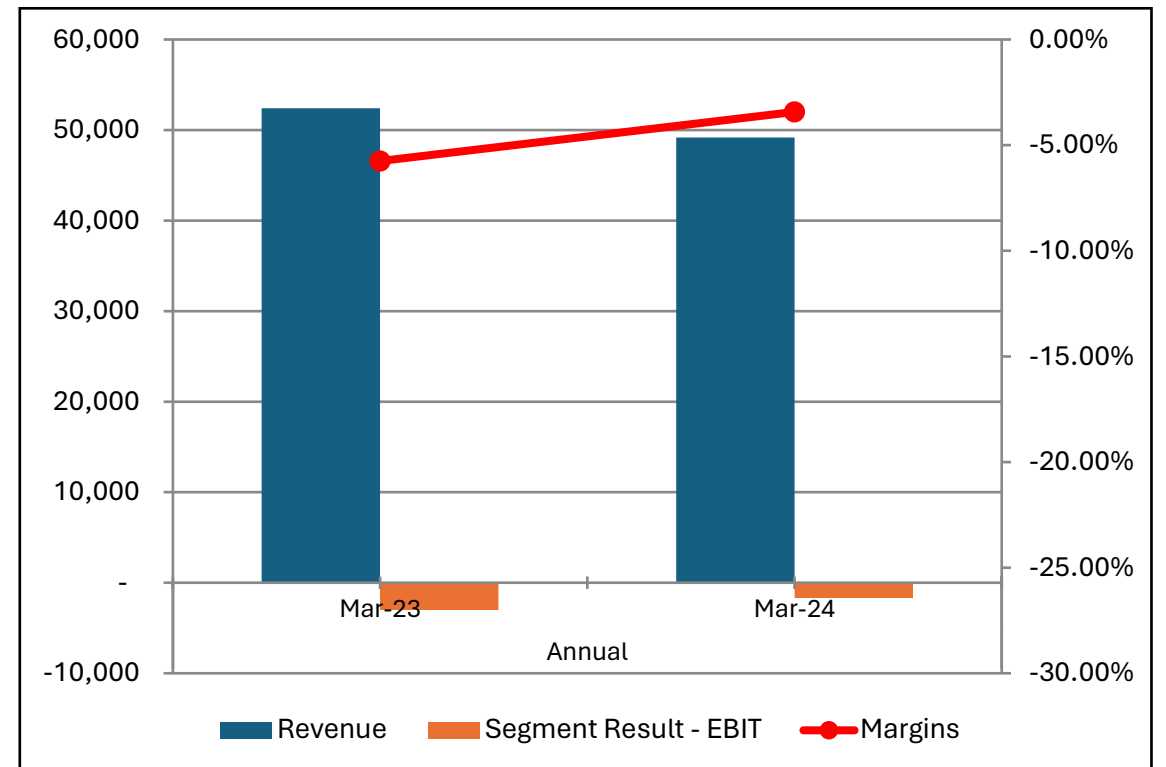
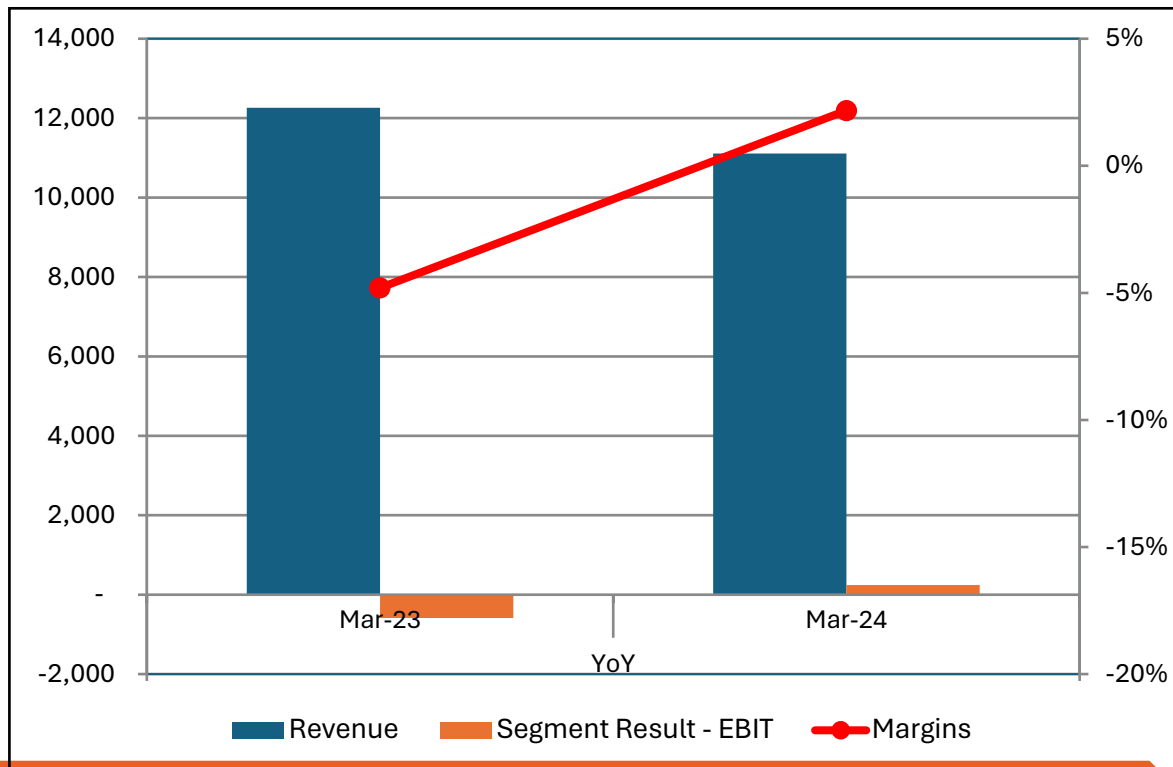


TEXTILE BUSINESS – FINANCIALS

Consolidated Financials	YoY	
	Mar 23	Mar 24
Revenue	12,261	11,107
Segment Result - EBIT	(589)	242
Margins	(5%)	2%

INR Lakhs

Consolidated Financials	Annual	
	Mar 23	Mar 24
Revenue	52,414	49,181
Segment Result - EBIT	(3013)	(1684)
Margins	(7%)	(4%)

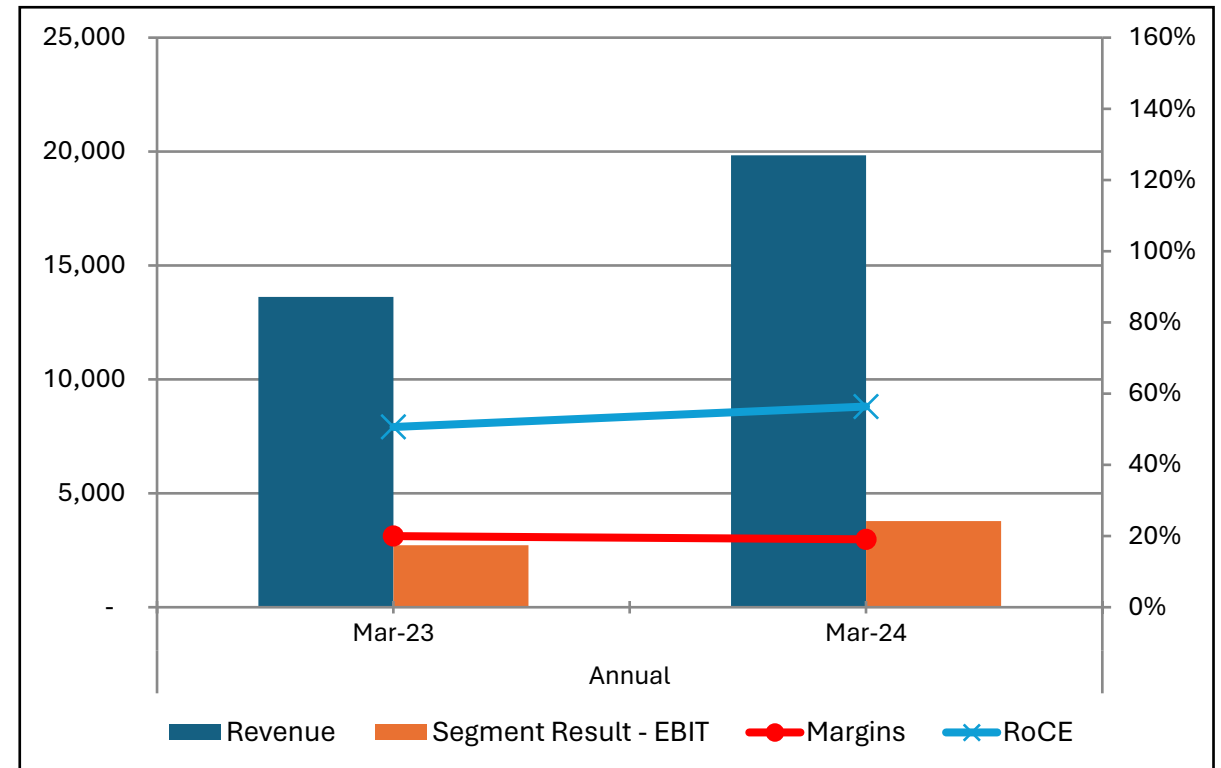
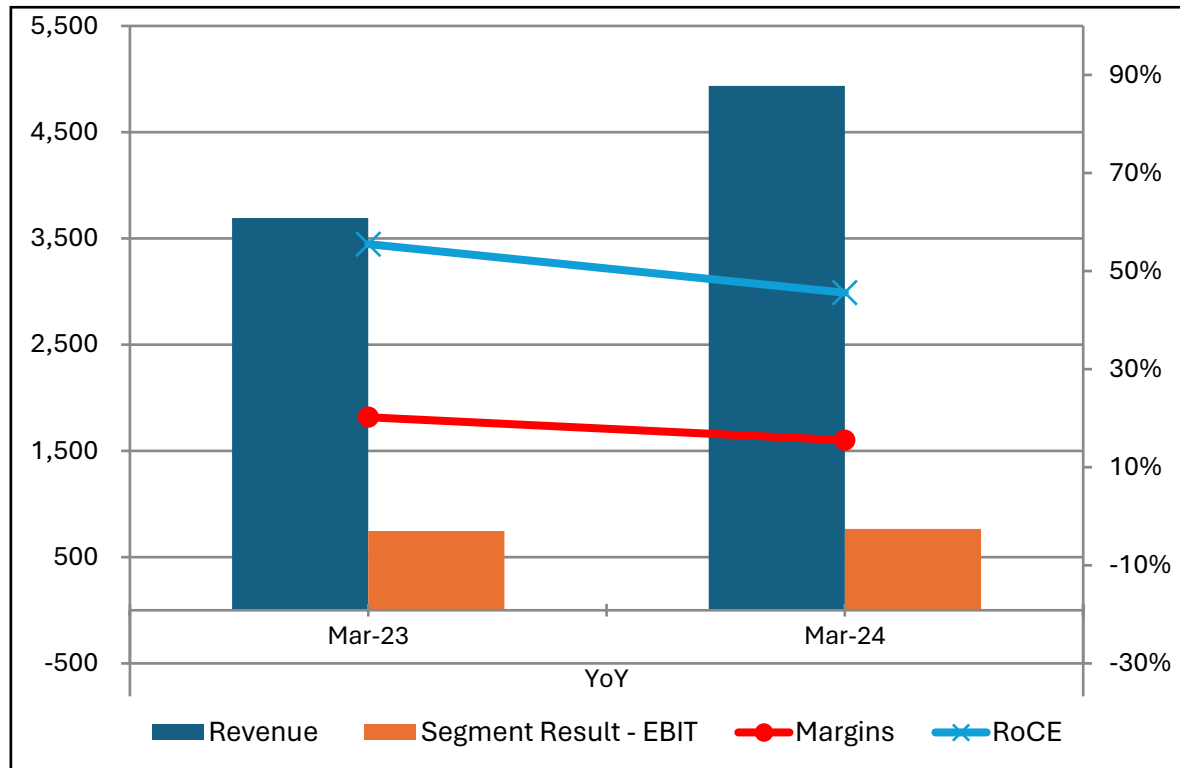


ENGINEERING & DESIGNING SERVICES – FINANCIALS

INR Lakhs

Consolidated Financials	YoY	
	Mar 23	Mar 24
Revenue	3,691	4,936
Segment Result - EBIT	746	765
Margins	20%	15%
RoCE	55%	46%

Consolidated Financials	Annual	
	Mar 23	Mar 24
Revenue	13,622	19,840
Segment Result - EBIT	2,721	3,782
Margin	20%	19%
RoCE	51%	56%



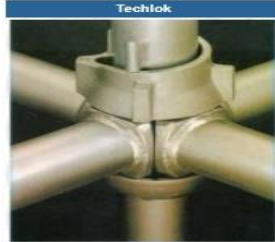
DRUM CLOSURES – SEGMENT OUTLOOK

- ▶ Revenue from Operations increased from ₹ 128 Crores to ₹ 153 Crores in Q4 on YoY basis. Profit Before Tax and Finance Cost but after Depreciation increased substantially by 30% from ₹ 43 crores to ₹ 55 crores, supported by margin improvement.
- ▶ In-spite of disturbances caused by global geo-political disturbances, the Revenue as well as profit have increased by about 20% and 30% respectively in Q4 on YoY basis. Company continues to be optimistic on this business, which gives regular cash profit and also hopes for improved performance going forward.
- ▶ No major capex is planned for this division other than maintenance capex in near future.



SCAFFOLDINGS & FORMWORKS – SEGMENT OUTLOOK

- Revenue from Operations increased from ₹ 214 Crores to ₹ 291 Crores in Q4 on YoY basis. However, Profit Before Tax and Finance Cost but after Depreciation reduced from ₹ 36 Crores to ₹ 27 Crores.
- Scaffolding business's Profit is reduced in Q4 on YoY Basis, due to pressure on margins caused by geo-political disturbances, slow-down in USA and Europe. Company is optimistic on this business and feels that this is not a permanent feature.
- Company is confident of strong prospects of this division due to anticipated growth in infrastructure and affordable housing construction demand in India as well as globally.
- The company's Aluminum Extrusion and Fabrication plant in Aurangabad to manufacture 17,500 MT p.a. of Aluminum Extrusion and 6,00,000 Sq. mts. p.a. of Aluminum Fabrication has commenced production in March 2024 which will be ramped up over a period of time.



TEXTILE – SEGMENT OUTLOOK

- ▶ Revenue from Operations of Textile (Fabric, Garment and Yarn) Division decreased from ₹ 122 Crores to ₹ 111 Crores in Q4 on YOY Basis amid challenging environment in Textile Segment. This Division had earned profit Before Tax and Finance Cost but after Depreciation of ₹ 2.50 Crores as against loss of ₹ 5.90 Crores in Q4 of FY23.
- ▶ The Textile segment of the Company has been observing pressure from market forces from quite some time. Demand of finished products in both domestic & International markets had come down which has affected overall performance of the division.
- ▶ Amravati Plant of the Company continues to give reasonable cash profit in spite of adverse market conditions. Company is hopeful that market condition for Cotton Yarn, Fabric and Garments will improve in future.
- ▶ Company has discontinued production in its Melange Yarn unit in Murbad, a vertical which was under pressure due to adverse market conditions.
- ▶ Company's Garment operations has been fully shifted to Amravati and Betul (M.P.) where it expects to give operational benefits as it is a low-cost area (local advantage) in terms of labor and operating costs.
- ▶ The losses in this division is reduced due to all above steps taken by the Company.



ENGINEERING DESIGNING SERVICES – SEGMENT OUTLOOK

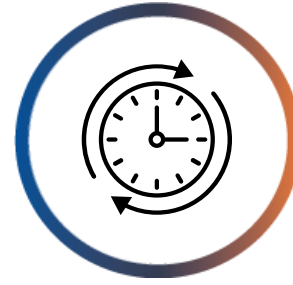
- ▶ Revenue from Operations increased substantially from ₹ 37 Crores to ₹ 49 Crores in Q4 on YOY Basis (increase of 33%). Profit Before Tax and Finance Cost but after Depreciation increased from ₹7.45 Crores to ₹ 7.65 Crores.
- ▶ Engineering Division of the Company has been growing steadily. Division has shown strong performance in terms of Revenue and margins on continuous basis aided with cost restructuring.
- ▶ Going forward, Company expects the demand for its services in this division to significantly increase due to strong acceptance of company's offshore global delivery model.



CREDIT RATING



**Total Bank Loan
Facilities Rated :
Rs. 976 crore**

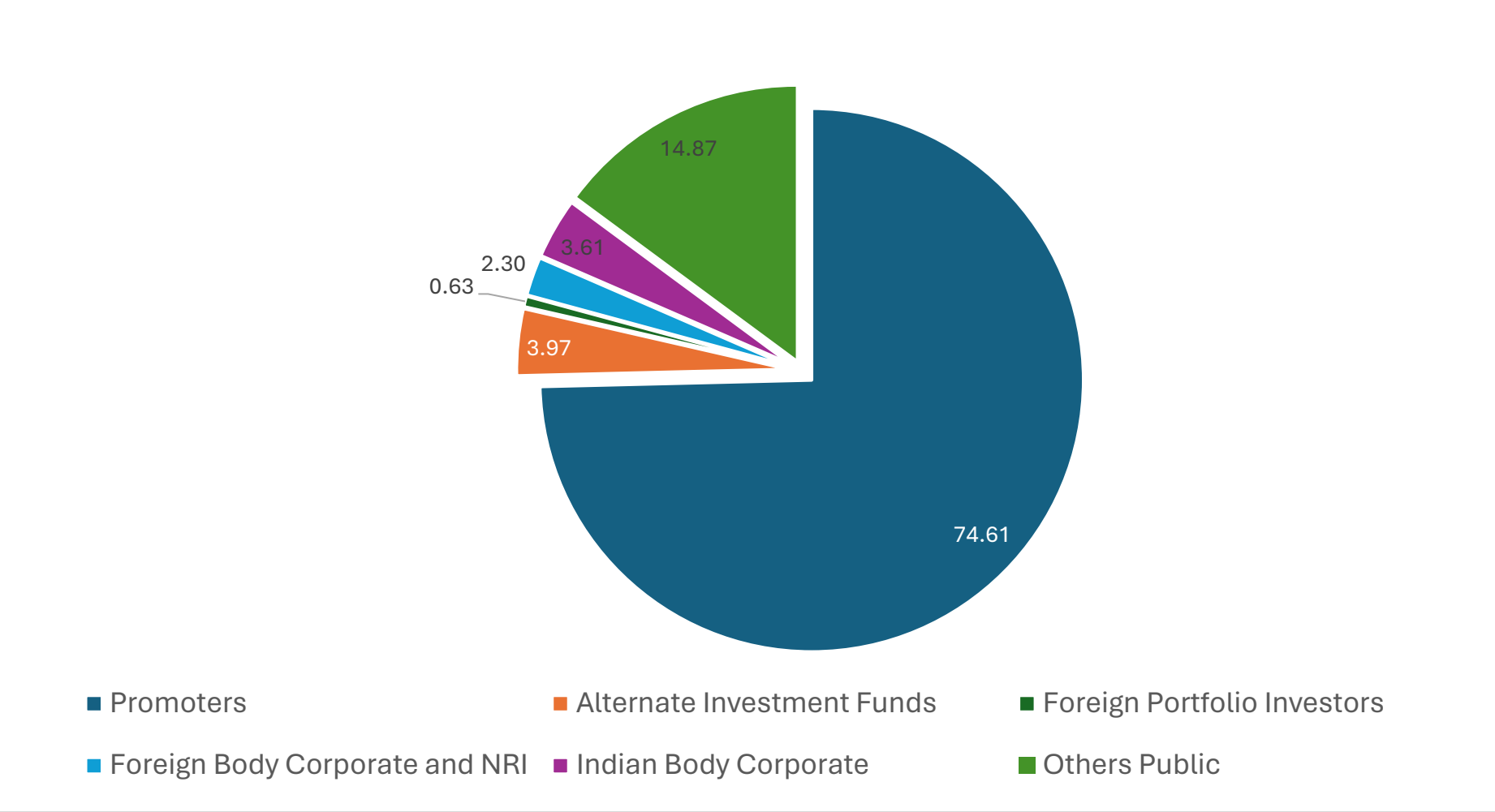


**Long Term Rating :
CRISIL AA-/ Stable**

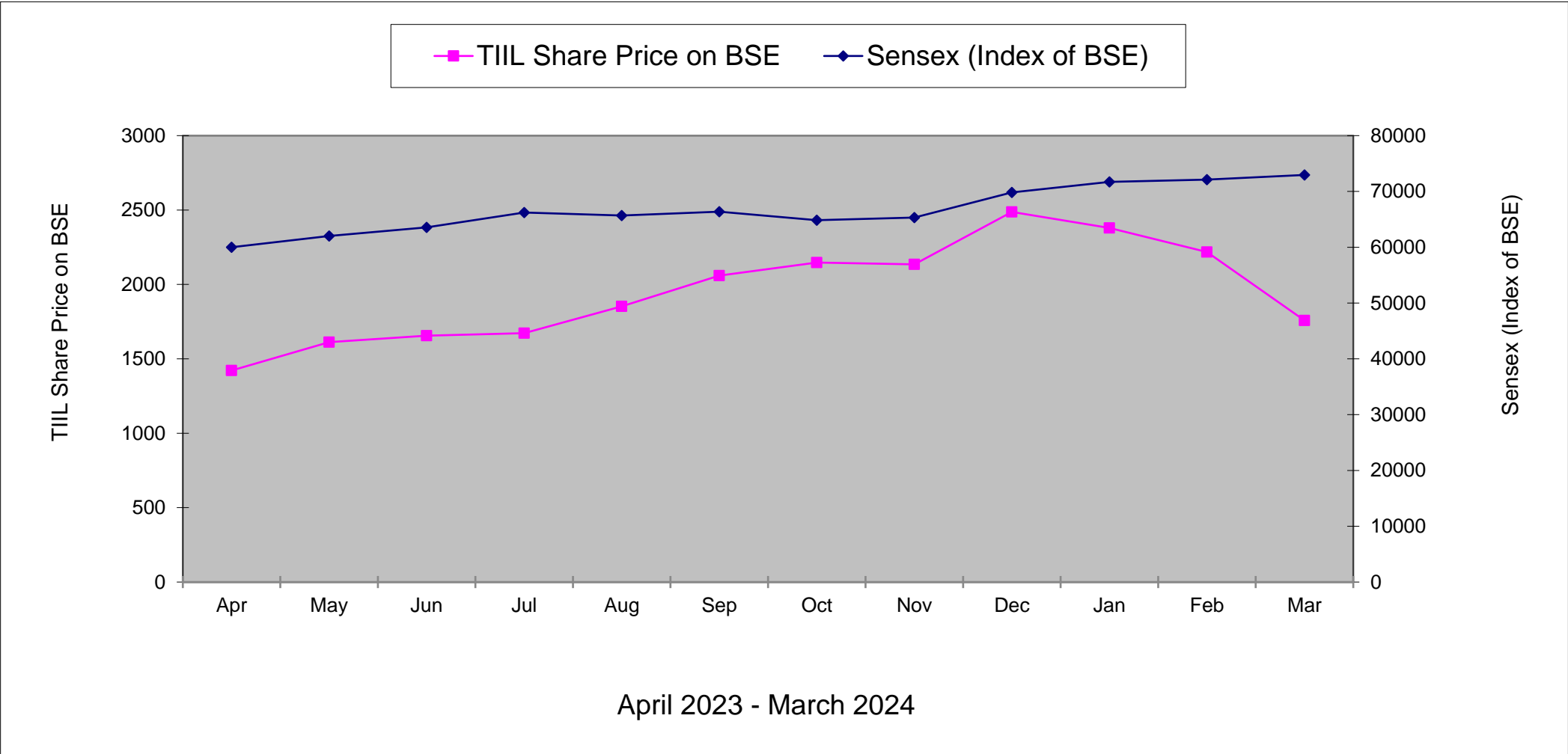


**Short Term Rating :
CRISIL A1+**

SHAREHOLDING & EQUITY STRUCTURE (as on 31.03.2024)



SHARE PRICE ON BSE



THANK YOU

For any clarifications, pls contact:

Mr. Anil Gadodia. Head – Finance. anil.gadodia@technocraftgroup.com